



# Okizu Oncology Camp Acceptance Packet 2019

This Acceptance Packet confirms your child's session of Oncology camp, and should provide you with the information you need to prepare for a week at Okizu. Please look over the packet carefully.

**Please bring the following with your child to the bus or to camp:**

- |  |  |
|--|--|
| <input type="checkbox"/> Medications<br><input type="checkbox"/> Oncology Camp Physical Form** – doctor signature required | <input type="checkbox"/> Motion sickness pills (if needed)<br><input type="checkbox"/> Photo envelope/form w/ payment (optional)<br><input type="checkbox"/> Snacks for the trip |
|--|--|

\*\*This form must be signed by a doctor. Every Oncology camper needs the signed physical form every year to participate.

**Bus Chaperones:** We need two parent volunteers on each bus as chaperones, and hope you can be one of them. Chaperones will assist and supervise the kids during the bus ride. If you're available for any of the trips, please confirm here: <https://www.surveymonkey.com/r/2019OkizuBus>

**Safety Reminder:** Please drive carefully and slowly at all Okizu bus stops. All stops are in public areas. Please be aware of pedestrians, other vehicles, and any other hazards. All pets should remain in the car at the bus stop.

### Bus Schedule:

**Monday**  
*(From the bus stop to camp)*

**Bus Stop – Palo Alto**  
Load – 7:15 am  
Depart – 7:30 am

**Bus Stop – East Bay**  
Load – 8:30 am  
Depart – 8:45 am

**Bus Stop – Fairfield**  
Load – 9:15 am  
Depart – 9:30 am

**Bus Stop – Sacramento**  
Load – 10:00 am  
Depart – 10:15 am

**Drivers**  
Arrive at camp between 10:30 – 11:00 am

**Directions to all Okizu bus stop locations are on page 2 of this packet.**

**Sunday**  
*(From camp to the bus stop)*

**Bus Stop – Palo Alto**  
Depart – 11:45 am  
Arrival Home – 4:00 pm

**Bus Stop – East Bay**  
Depart – 11:45 am  
Arrival Home – 3:00 pm

**Bus Stop – Fairfield**  
Depart – 11:45 am  
Arrival Home – 2:30 pm

**Bus Stop – Sacramento**  
Depart – 11:45 am  
Arrival Home – 2:00 pm

**Drivers**  
Pick your child up between 10:30 – 11:00 am

**Directions to all Okizu bus stop locations are on page 2 of this packet.**

If you need to make changes to your child's drop-off or pick-up time or location please call the Okizu office. If, for some reason, the bus drop-off or pick-up time or location has changed, the Okizu office will contact you.

# Directions to Okizu Bus Stops

**Palo Alto:** The Okizu bus will pick up and drop off at Palo Alto High School, 50 Embarcadero Road, Palo Alto, CA 94301. The parking lot is on the corner of Embarcadero Road and El Camino Real.

## From US-101 North

Head northwest on US-101 North toward Exit 402  
Keep left at the fork, follow signs for Embarcadero Road/Stanford University  
Keep left at the fork, follow signs for Embarcadero Road West and merge onto Embarcadero Road  
Keep left at the fork  
Palo Alto High School will be on the left

## From US-101 South

Take exit 402 for Embarcadero Road/Oregon Expressway  
Keep right at the fork, follow signs for Embarcadero Road West and merge onto Embarcadero Road  
Keep left at the fork  
Palo Alto High School will be on the left

## From I-280 North

Head west on I-280 North  
Take exit 24 for Sand Hill Road  
Keep right onto Sand Hill Road  
Turn right onto Arboretum Road  
Turn left onto Galvez Street  
Continue onto Embarcadero Road  
Palo Alto High School will be on the left

## From I-280 South

Head southeast on I-280 South  
Take exit 24 for Sand Hill Road toward Menlo Park  
Keep left at the fork, follow signs for Sand Hill Rd E  
Keep right at the fork, follow signs for Sand Hill Road and merge onto Sand Hill Road  
Turn right onto Arboretum Road  
Turn left onto Galvez Street  
Continue onto Embarcadero Road  
Palo Alto High School will be on the left

**East Bay:** The Okizu bus will pick up and drop off at Park and Ride lot at exit 19B on I-80.

## From I-80 East

Take exit 19B  
Continue straight through the intersection, across Hilltop Drive  
Take an immediate left into the Park and Ride lot

## From I-80 West

Take exit 19B toward Hilltop Mall-Auto Plaza  
Keep left at the fork; follow signs to Hilltop Drive South  
Turn left onto Hilltop Drive onto the overpass  
At the end of the overpass, turn left at the first light  
*There is a green 'park and ride' sign and you can see the lot on your left.*  
Take an immediate left into the Park and Ride lot

**Fairfield:** The Okizu bus will pick up and drop off at Park and Ride lot at the Red Top Road exit on I-80. It is across from the Sunnyside Dairy.

## From I-80 East

Take the Red Top Road exit  
Turn left at the stop sign onto Red Top Road – You will go under the freeway  
Continue through the next stop sign on Red Top Road  
Follow road around the right, past the 76 station  
Turn right into the Park and Ride lot

## From I-80 West

Take the Red Top Road exit  
Turn right onto Red Top Road  
Follow road around the right, past the 76 station  
Turn right into the Park and Ride lot

**Sacramento:** The Okizu bus will pick up and drop off at the J/K section of the Ikea parking lot, 700 Ikea Court, West Sacramento, CA 95605.

## From I-80 East

Take the Reed Avenue exit  
Turn right onto Reed Avenue  
Turn right onto Ikea Court  
Continue to the J/K section of the parking lot

## From I-80 West

Take the Reed Ave. exit toward West Sacramento  
Turn right onto Reed Avenue  
Turn right onto Ikea Court  
Continue to the J/K section of the parking lot

## **None/Driving:**

You are responsible for your child's transportation to and from camp. Please see the attached map for directions to camp and plan to drop off and pick up at camp between 10:30 am and 11:00 am.

## **Notes:**

- Please allow plenty of time to find the Okizu bus stops. We are not able to hold the bus for folks who are late and it can be very sad and stressful if you miss the bus.
- Please research the specific directions from your house before you head to the bus.
- If you do get lost you can call the office at 415-382-9083 and we will try and help.

Welcome to Okizu's Oncology Camp program!

**All Oncology campers need a medical form signed by their physician each year in order to participate in Okizu. Patients who are no longer seeing an Oncologist should have their family doctor or pediatrician complete the form.**

In addition to a packing list, theme, and bus information, this packet contains the following forms that should be completed and brought to the bus/camp with your child:

- **The Oncology Camp Physical Form.** This form needs to be completed and signed by your child's doctor. We need a new signed form for every child every year. Once completed, bring this form with your child to the bus/camp.
- **Camp Photos - optional.** If you would like to participate in the camp photo opportunity, fill out the enclosed information from Visual Sports Network, include your payment for the correct amount (checks should be made payable to **Visual Sports Network**), and have your child bring the form/envelope and payment to the bus/camp.

**Okizu Health Form Information for Oncology and SIBS Campers:**

- All Oncology/SIBS campers have already submitted a Health History Form as part of the application process.
- All Oncology campers require a second medical form signed by their doctor.
- All SIBS campers who require treatment, restriction, or accommodation while at Okizu require a second medical form signed by a doctor. That document, the Camper Health Care Form 2, is included in your child's Acceptance Packet, and must be completed, signed by a physician, and come with your child to the bus/camp.

**We cannot accept any child at camp or on the bus without completed and signed paperwork.**

If your child is riding the bus, paperwork should be given to the Okizu representative at the bus stop. If you are driving your child to camp, paperwork should be given to the Okizu representative that greets you upon arrival.

**Please do not pack paperwork in your child's suitcase.**

Okizu's online application system does not allow you to make changes to submitted applications, so if you need to request a change, update information, or feel there is an error, please contact the Okizu office by phone or email.

We look forward to welcoming your children at Okizu this summer.

*Kristen Hitchman*

Kristen Hitchman  
Camp Director

# Medical Information

Dear Parents,

This letter is to explain the health care coverage that will be provided to your child during the camp session.

Dr. Michael Amylon, Medical Director for camping programs, supervises medical coverage at Camp Okizu. Additionally, health care professionals including doctors, nurses, and social workers from the various hospitals that participate in the Okizu programs volunteer their time to meet the needs of campers throughout the summer.

At least one pediatric oncologist and several pediatric oncology nurses will be present at each Oncology Camp session. Nurses from the treatment centers provide care at the SIBS Camp sessions, with back up from a pediatrician who is always available by phone. Usually, there is a pediatric oncologist present throughout the SIBS Camp sessions as well. The camp medical staff is able to consult with the hematology/oncology team at your child's treatment center at any time if questions arise regarding his/her treatment or condition. These professionals provide continuous supervision of the health care needs of your child, ensure that medications are given appropriately, and arrange for special procedures such as laboratory tests and transfusions.

The Medical Director or his designee will contact you if there is any significant illness or injury to your child, or any medical need that requires a visit to the local hospital. While camp is in session, please feel free to call the camp Health Center at 530.589.6983 or the camp office at 530.589.6985 if you wish to discuss your child's condition or care needs with one of the medical staff.

Sincerely,



Michael D. Amylon, M.D.

"Dr. Mike"

Camp Medical Director

# What to Bring to Camp Okizu

**Suggested items to bring:** You do not need to own all these items to attend Camp Okizu. Please call the office if you have questions or need help with items on the list.

- |  |   |
|--|---|
| <input type="checkbox"/> Sleeping bag        | <input type="checkbox"/> Long pants   |
| <input type="checkbox"/> Pillow              | <input type="checkbox"/> Warm pajamas   |
| <input type="checkbox"/> Insect repellent    | <input type="checkbox"/> Swimsuit   |
| <input type="checkbox"/> Sunscreen           | <input type="checkbox"/> Washcloth  |
| <input type="checkbox"/> Underwear (8 pairs) | <input type="checkbox"/> Toiletries   |
| <input type="checkbox"/> Socks (8 pairs)     | <input type="checkbox"/> Water bottle   |
| <input type="checkbox"/> T-shirts (7)        | <input type="checkbox"/> Flashlight   |
| <input type="checkbox"/> Long sleeve shirts  | <input type="checkbox"/> Closed toe shoes x2 (in case one gets wet)             |
| <input type="checkbox"/> Jacket, sweatshirt  | <input type="checkbox"/> Medication (one week supply in its original container) |
| <input type="checkbox"/> Shorts              | <input type="checkbox"/> Towels x2 (one for showering and one for swimming)     |

Please mark your child's name on all belongings you want returned if lost or forgotten. After each week of camp there are clothes, towels, pillows, etc. that go unclaimed and we can only return items we can identify. We will hold unclaimed lost and found items until October.

## **Personal property regulations at Camp Okizu:**

- We do not allow pets, alcohol, illegal or recreational drugs (including tobacco products, electronic cigarettes, and matches/lighters), or weapons of any kind. People who bring any of these items will not be allowed at camp.
- Personal vehicles are allowed to transport campers and staff to camp, but must remain in the parking lot (and not driven around camp) while camp is in session.
- Personal sports equipment (archery, fishing, bats, climbing gear, etc.) is discouraged, as items often get lost or damaged while at camp. If your child opts to bring them, they must be packed, stored, and transported to camp in a way that will be safe for anyone who comes in contact with them. We will not be responsible in case of loss or damage under any circumstances.
- Cameras are allowed, but cell phones are not. We encourage disposable cameras with your child's name on them.

## **Personal electronic devices and cell phones are not allowed at Camp Okizu.**

- This may seem drastic but it does work. Every summer we welcome a large, skeptical group of text-crazy teens and tweens who thrive during their week at Camp Okizu without their devices.
- If cell phones or personal electronic devices do come to camp they will be put in a brown bag marked with the camper's name on the first day of camp and given back at the end of the week.
- We are not responsible in case of loss or damage to any of these items under any circumstances.

## **Mail:**

- **Send it early.** Camp Okizu is on a rural mail route and mail takes at least five business days to get there.
- **Don't send it to the Okizu business office.** All camper mail should be sent to the campsite address.
- **Address mail as follows:**



**Camper Name**  
**c/o Camp Okizu**  
**PO Box 1310**  
**Berry Creek, CA 95916**

# Important Information

## Phone calls:



- Parents are welcome to phone the Camp Director to see how their child is doing any time and as often as they would like. We are used to getting calls from parents and are glad to be able to tell you how your kids are doing.
- In order to keep everyone in the camp spirit and try to manage moments of homesickness, we have elected not to have kids use the phone while they are at camp. This does not apply to family emergencies.
- The camp phone number is **530.589.6985**.

## Camp photos (optional):

- If you would like to participate in the camp photo opportunity, fill out the enclosed order form/envelope from Visual Sports Network, include payment for the correct amount (checks should be made payable to **Visual Sports Network**), and have your child bring the form/envelope and payment to camp.
- Do not pack the photo information in your child's suitcase. It should accompany the other Okizu forms and be turned in at the bus stop or at camp if you are driving.
- Photos will be sent in the mail by Visual Sports Network. It takes 4-6 weeks.

## Health information:

- All Oncology/SIBS campers have already submitted a Health History Form as part of their application process.
- All Oncology campers require a second medical form signed by their doctor.
- All SIBS campers who require treatment, restriction, or accommodation while at Okizu also require a medical form signed by their doctor.
- Health care professionals including doctors, nurses, and social workers from the hospitals that participate in the Okizu programs meet the medical needs of campers throughout the summer. At least one pediatric oncologist and several pediatric oncology nurses will be present at each Oncology Camp session. Nurses from the treatment centers provide care at the SIBS Camp sessions, with back up from a pediatrician who is always available by phone. Usually, there is a pediatric oncologist present throughout the SIBS Camp sessions as well.
- All medications must be well marked with instructions for dosage and schedules and must be in their original container and will be dispensed by the camp nurse.

## Know before you go:

We want Camp Okizu to be a place that is safe and fun for all the kids. In order to be sure that we are maintaining an environment that is physically and emotionally safe and supportive, we have set some guidelines/ground rules that we all agree to operate within while we are at camp. We feel it is in the kids' best interests if they are aware of these before they come to camp. This will help reassure them, and help get them engaged in cooperating as a member of our team. Please discuss these issues with your kids before they come to camp. Some of our ground rules include, but are not limited to:

- **Respect the program – the kids, the staff, the camp, the songs, everything.**
- **Cooperate with your counselor and other staff at all times.**
- **Actions or behavior that endangers people or property will result in losing your privilege to finish your week at camp.**
- **It is important that we treat the camp with respect and not participate in any destruction of equipment, property, belongings, or facilities. These are behaviors that will result in losing your privilege to be at camp.**
- **Cell phones and personal electronic devices interfere with the 'back to nature' atmosphere that we are trying to create during the week and you will not have access to them while you are at camp.**

# Okizu Transportation Information for Bus Riders 2019



We are delighted to have the resources to provide bus transportation for our campers. If you choose to have your child take the bus, s/he will be transported to camp in a chartered, air-conditioned bus with a bathroom. On the bus with your child will be two parent volunteer chaperones. **There will be no medical coverage during the bus ride.** Please read this sheet to understand your responsibilities if you choose to use our transportation.

## **Campers who require assistance on the bus:**

For safety reasons we need to be aware of any physical challenges or special needs of the kids traveling on the buses in advance. By making us aware of these conditions and issues in advance, it will allow us to work together to come up with a plan to get your child safely to and from camp.

- **Please let us know if your child would require any physical assistance getting off the bus in an emergency situation.** This might be due to a physical condition, or an emotional condition which would make it difficult to get them moving quickly.
- **Please let us know if your child would need help using the bathroom on the bus.** Sometimes there is only a dad or only a mom on the bus and we want to make sure everyone is comfortable.

## **Safety precautions and behavior expectations on the bus:**

- **Please drive slowly and carefully at all Okizu bus stops.** All stops are in public areas. Please be aware of pedestrians, other vehicles, and any other hazards. All pets should remain in the car at the bus stop.
- **Children must be respectful on the bus ride.** It is important for safety that all riders are respectful and listen carefully to any instructions given by the driver or volunteer bus chaperones. Riders should remain seated at all times while the bus is in motion and keep any noise to a level that will not distract the driver. Any disruptive behavior on the bus is a safety risk and may jeopardize a child's privilege to participate in camp.

## **Parent responsibilities:**

*By participating in Okizu's bus transportation you agree to:*

- **Be on time.** Please arrive at the stop at the times that we designate in this packet, and all subsequent communications with you.
- **Be prepared to wait.** Traffic is unpredictable, and in order to provide the safest situation for your child, we need you to be waiting at the bus stop when the bus arrives.
- **On Monday, check-in with the volunteer bus coordinator at your stop.** The volunteer bus coordinator will collect your completed and signed medical form(s), Consent Form, photo order, and any medications that your child is bringing to camp. The Okizu Consent Form and the medical form(s) serve as your child's ticket onto the bus.
- **On Sunday, check-out with the Okizu representative at the bus stop.** It is exciting and sometimes hectic when the bus arrives at the stop and everyone is reuniting with their child, so please don't forget to check your child out with the Okizu representative at the bus stop.
- **Be on time.** I know we said it before but we have very limited options if parents aren't there to pick up their children when the bus arrives so for the safety and well-being of all involved, please be on time.

**We are delighted to have the resources to provide bus transportation for our campers and appreciate your cooperation and commitment to make it a safe and pleasant experience for the children.**

# Okizu Policy Regarding Out-of-Camp Contact with Staff

The safety and well-being of our campers — your children — have always been our most important concern. We know that giving your children over to the care of another is a great act of trust, and we aim to do everything we can to earn and keep that trust. But we need your help to keep them as safe and happy as possible. With more and younger children using the internet, cell phones, and other technologies, we need parents to partner with us to ensure that your children continue to have the best possible experience with us.

Please read this policy carefully and discuss it with your children. We have added some tips for internet safety to our website and invite you to read those as well. As always we invite you to call us if you have any questions or concerns about any of these issues.

## **Your Kids, Our Staff after Camp**

We pledge to put your children in the company of trustworthy and capable young adults – counselors who are well-suited to the important task of caring for our campers. The effort we put into screening and selecting our staff is part of that pledge. Our staff work with your children in a visible, well scrutinized environment with built-in checks and balances. Counselors are supervised by senior staff guided by clear, firm policies regarding behavior. Their actions are also visible to co-workers and campers. We have selected them to work with us in the very special context of camp, and therefore we cannot recommend them as baby-sitters, nannies, or child companions outside of camp.

We know that camp can foster the development of close, trusting relationships between counselors and campers and that these relationships can be healthy and beneficial to all concerned. We are aware that many campers will want to keep in touch with their favorite counselors after camp. Our policy is to forbid our staff from having contact with your children outside of camp without the express consent of at least one parent. If you become aware of any unauthorized contact, you should notify us immediately. We engage our staff and volunteers only during the camp season, and we do not monitor, and cannot take responsibility for, their behavior off-season. Of course, as a parent you are free to make your own choice in this matter. If you choose to allow your child to have contact with one of our staff members outside of camp, we need to remind you that you take full responsibility for that relationship, and you should supervise that relationship the same way you would a relationship with an adult that your child had met in any other context. It is also important for you and your children to remember that our staff are busy young adults and may not be able to maintain relationships with campers outside of camp. We hope that recognizing this will help you to manage your children's expectations for out-of-camp contact with our staff.

Our counselors are not allowed to exchange contact information (e.g., email address, cell phone numbers) with campers during camp sessions and are not allowed to “friend” or follow campers on social media websites while the campers are under 18. Our counselors are also not allowed to permit campers to follow them on social media websites. We recommend that parents supervise their children's online activities just as you do other aspects of their lives and oversee any off-season contact between Okizu staff members and your children.

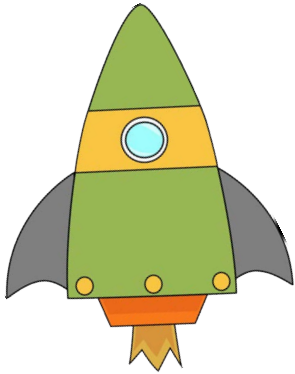
## **Working Together to Keep Your Children Safe**

There are many positive, exciting ways for campers to enjoy the healthy benefits of the internet and other technologies. As advocates for children, we want to work with you to keep those experiences safe, healthy, and positive. That is why we have taken the time to write these policies and to include resources for you and your children on our website. We encourage you to talk with your children, both about camp and their online activity in general.

\*With excerpts from Bob Ditter's Policy Regarding Out-of-Camp Contact between Campers and Staff.



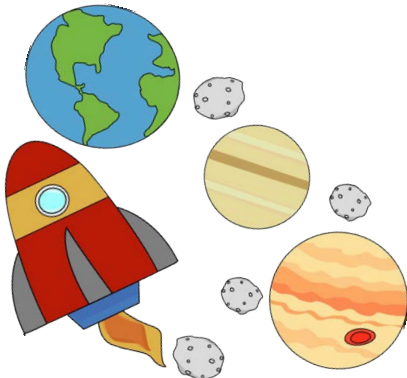
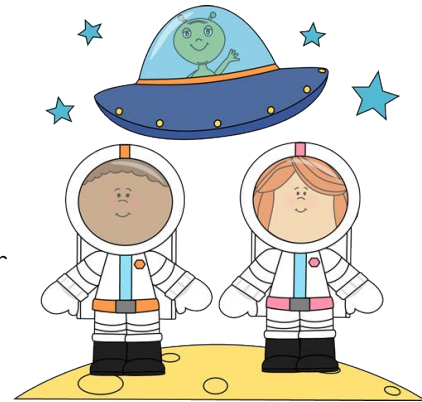
# Okizu Theme and Special Event Information 2019



This year we are having an **Intergalactic Summer**, which will include the following themed events and meals:

Come and see which extraterrestrials will join us for our traditional **SPACEball Lunch!** You are invited to bring a baseball hat, t-shirt, jersey to wear!

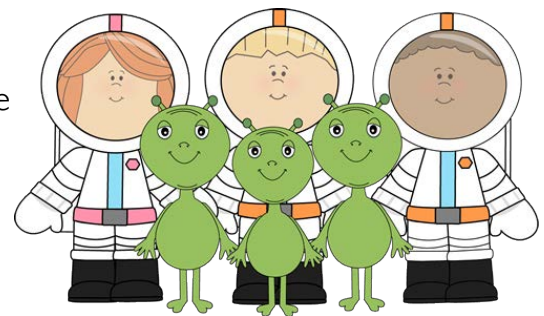
On Wednesday, we will be heading outside for a **Lunar Landing Dinner**. Don't worry, dinner won't be astronaut food! After dinner, we will head to the **Asteroid Field** for some **Galaxy Games** and the **Lunar Lounge** for some **Cosmic Karaoke**.



Thursday's all-camp event will be **Okizu's Meteor Shower**. Grab your swim suit, towel, and dodge the meteor "showers" in our water carnival!

On Friday, we will have a **Rocket-Out Dance!** One more chance to show off your space wear, glow in the dark, moon-shoes, and dance the night away between the space lasers and blacklights!

Additionally, there will be a pajama breakfast at our **Intergalactic House of Pancakes** one day during the week.



We are letting you know about the theme and these events in advance so, if you choose, you can bring costumes or other items to camp. This is completely optional and we will have opportunities to create costumes and other items at camp.

Please don't bring anything that is valuable since many things get lost and dirty at camp. Please also make sure that your costumes, like your regular camp clothing, are always camp appropriate.

# Camp Photos (Optional)

IND/BUD      IND/BUD      IND/BUD      IND/BUD  
 CAMPER'S NAME \_\_\_\_\_  
 ADDRESS \_\_\_\_\_  
 CITY \_\_\_\_\_ STATE \_\_\_\_\_ ZIP \_\_\_\_\_  
 PHONE \_\_\_\_\_ CAMP \_\_\_\_\_

PERSONALIZE ME!  
 Include my NAME or NICKNAME and YEAR on my photos!     ONLY \$5.00  
           -    
 INDIVIDUAL      BUDDY

**INDIVIDUAL AND GROUP PACKAGES**

1	LINCOLN	\$57.00
2	REAGAN	\$53.00
3	WASHINGTON	\$47.00
4	ROOSEVELT	\$43.00
5	KENNEDY	\$41.00
6	FRANKLIN	\$38.00
7	JEFFERSON	\$35.00
8	IKE	\$32.00

**ALL - IN - ONE**

9	ALL-IN-ONE	\$30.00
	ALL-IN-ONE (HALF PRICE WITH 1-8 PACKAGE PURCHASE)	\$15.00
10	ALL-IN-ONE + BUDDY	\$38.00
	ALL-IN-ONE + BUDDY (HALF PRICE WITH 1-8 PACKAGE PURCHASE)	\$19.00

**PERSONALIZED PRODUCTS**

11	MAGAZINE COVER	\$16.00
12	16x20 BANNER	\$23.00
13	12x30 PENNANT	\$23.00
14	BANNER MAGNET	\$14.00
15	PENNANT MAGNETS	\$14.00
16	DELUXE MAGNETS	\$14.00
17	LANYARD	1 \$12.00
		2 \$20.00
18	MOUSE PAD	\$15.00

-    
 NAME ON PERSONALIZED PRODUCTS \_\_\_\_\_ YEAR \_\_\_\_\_

**BUDDY PACKAGES**  
Yourself and Best Buddies (Up to 5 People)

19	DELUXE BUDDY	\$20.00
20	STANDARD BUDDY	\$15.00

**ADD-ONS**

21	2 - 3" PHOTO BUTTONS	<input type="checkbox"/> IND <input type="checkbox"/> BUDDY	\$12.00
22	PHOTO DOG TAG (NECKLACE KEYCHAIN)	<input type="checkbox"/> IND <input type="checkbox"/> BUDDY	\$12.00
23	1 - 8x10	<input type="checkbox"/> IND <input type="checkbox"/> BUDDY	\$15.00
24	2 - 5x7	<input type="checkbox"/> IND <input type="checkbox"/> BUDDY	\$15.00
25	8 - WALLETS	<input type="checkbox"/> IND <input type="checkbox"/> BUDDY	\$15.00
26	1 - 16x20 POSTER	<input type="checkbox"/> IND <input type="checkbox"/> BUDDY	\$27.00

**GROUP ONLY**

27	16 x 20 GROUP	<input type="checkbox"/> REG <input type="checkbox"/> FUNNY	\$27.00
28	11 x 14 GROUP	<input type="checkbox"/> REG <input type="checkbox"/> FUNNY	\$24.00
29	8 x 10 GROUP	<input type="checkbox"/> REG <input type="checkbox"/> FUNNY	\$20.00

**T-SHIRTS**

30	PHOTO T-SHIRT	<input type="checkbox"/> GROUP <input type="checkbox"/> IND <input type="checkbox"/> BUDDY	\$17.00
	SIZE	<input type="checkbox"/> S <input type="checkbox"/> M <input type="checkbox"/> L <input type="checkbox"/> XL <input type="checkbox"/> XXL <input type="checkbox"/> XXXL	

MAKE CHECKS PAYABLE TO: **VISUAL SPORTS**  
 PAYMENT BY CHECK IS YOUR EXPRESS AUTHORIZATION THAT ALL RETURNED CHECKS AND MAX ALLOWABLE STATE FEE (OR \$35) WILL BE DEBITED/DRAFTED FROM YOUR ACCOUNT. TO REVOKE/VERIFY/DISPUTE 800.460.0124  

SHIPPING	\$4.00
<b>TOTAL</b>	

- If you would like to participate in the camp photo opportunity, fill out this order form from Visual Sports NorCal.
- Payment can be made by check or cash.
- Please attach payment to this form or put the form and payment in an envelope.
- Checks should be made payable to Visual Sports NorCal.
- Please be sure to include an additional \$4.00 for shipping and handling.
- The form and payment should accompany the other Okizu forms and be turned in at the bus stop or at camp if you are driving.
- Please do not pack the photo information in your child's suitcase.
- Photos will be sent in the mail by Visual Sports NorCal. It takes 3 weeks. Please contact Visual Sports NorCal at 916.985.7788 with any questions.
- You can find more details directly on the website at [www.visualsportsnorcal.com](http://www.visualsportsnorcal.com)

**\*For descriptions of the different packages and photo options, please look at the following page, 12, for further details.**

# Camp Photos (Optional)

## CAPTURE THE MEMORY WITH VISUAL Sports

(916) 985-7788

### PACKAGES

**PERSONALIZE ME!**  
**INCLUDE YOUR NAME OR NICKNAME**  
**AND YEAR ON ANY PACKAGE**  
**(BUDDY OR INDIVIDUAL)**  
**FOR ONLY AN ADDITIONAL - \$5**

**1 LINCOLN**  
 1 - 16x20 Group Portrait  
 3 - 8x10 Individuals  
 3 - 5x7 Individuals  
 8 - Wallets Individuals **\$57.00**

**2 REAGAN**  
 1 - 8x10 Group Portrait  
 3 - 8x10 Individuals  
 3 - 5x7 Individuals  
 8 - Wallets Individuals **\$53.00**

**3 WASHINGTON**  
 1 - 16x20 Group Portrait  
 2 - 8x10 Individual  
 2 - 5x7 Individuals  
 4 - Wallets Individuals **\$47.00**

**4 ROOSEVELT**  
 1 - 11x14 Group Portrait  
 2 - 8x10 Individual  
 2 - 5x7 Individuals  
 4 - Wallets Individuals **\$43.00**

**5 KENNEDY**  
 1 - 8x10 Group Portrait  
 2 - 8x10 Individual  
 2 - 5x7 Individuals  
 4 - Wallets Individuals **\$41.00**

**6 FRANKLIN**  
 1 - 16x20 Group Portrait  
 3 - 5x7 Individuals  
 4 - Wallets Individuals **\$38.00**

**7 JEFFERSON**  
 1 - 11x14 Group Portrait  
 3 - 5x7 Individuals  
 4 - Wallets Individuals **\$35.00**

**8 IKE**  
 1 - 8x10 Group Portrait  
 3 - 5x7 Individuals  
 4 - Wallets Individuals **\$32.00**

### ALL-IN-ONE OFFICE / GRAND PARENTS PHOTO

<p><b>9 11x14 ALL - IN - ONE</b>                  Includes                  Group &amp; Individual  <b>\$30.00</b></p>	<p><b>10 10x20 ALL - IN - ONE + BUDDY</b>                  Includes                  Group, Individual &amp; Buddy  <b>\$38.00</b></p>
--	--

**Receive ALL-IN-ONE photo for half price with the purchase of a package 1 - 8 #9 half price - \$15 #10 half price - \$19**

### PERSONALIZED PRODUCTS

\*ALL ITEMS INCLUDE YOUR NAME OR NICKNAME AND YEAR - SEE EXAMPLES ON BACK. \*MOST ITEMS CAN BE INDIVIDUAL OR BUDDY

<b>11 MAGAZINE COVER</b> (8x10) <b>\$16.00</b>	<b>15 PENNANT MAGNETS</b> (Set of 2 - 3.25x9) <b>\$14.00</b>
<b>12 16x20 BANNER</b> <b>\$23.00</b>	<b>16 DELUXE MAGNETS</b> (set of 2 - 3.5x5) <b>\$14.00</b>
<b>13 12x30 PENNANT</b> <b>\$23.00</b>	<b>17 LANYARD</b> (3.75x6.5) <b>1 / \$12.00</b> <b>2 / \$20.00</b>
<b>14 BANNER MAGNET</b> (5x6.25) <b>\$14.00</b>	<b>18 MOUSE PAD</b> <b>\$15.00</b>

### BUDDY PACKAGES

Yourself, Best Buddies or Coach (up to 5 people)

**19 DELUXE** **\$20.00**  
 (2 - 5x7s and 8 - wallets)

**20 STANDARD** **\$15.00**  
 (1 - 5x7 and 4 - wallets)

### INDIVIDUAL OR BUDDY

**21 2 - 3" Photo Buttons** \$12.00

**22 1 - Photo Dog Tag** \$12.00

**23 1 - 8x10** \$15.00

**24 2 - 5x7** \$15.00

**25 8 - Wallets** \$15.00

**26 1 - 16x20 Ind. Poster** \$27.00

### TEAM/GROUP ONLY

**27 1 - 16x20** Reg  Funny  \$27.00

**28 1 - 11x14** Reg  Funny  \$24.00

**29 1 - 8x10** Reg  Funny  \$20.00

### T-SHIRTS

**30 1 - Photo T-Shirt** \$17.00

# Oncology Camp Physical Form

**Parents:** Please have this form **completed by your child's physician** and bring it with your child to camp. If your child is off treatment this form may be completed by their pediatrician or their oncologist.

**My child is scheduled to attend camp on** \_\_\_\_\_  
(Please write in the appropriate date)

Camper's name: \_\_\_\_\_ Date of birth: \_\_\_\_\_

Diagnosis: \_\_\_\_\_ Date of diagnosis: \_\_\_\_\_

Stage in treatment: \_\_\_\_\_ Remission: \_\_\_\_\_ Yes \_\_\_\_\_ No

Date/Type Last IV/PO chemo: \_\_\_\_\_

**General:** \_\_\_\_\_ **Date:** \_\_\_\_\_

**P/E** \_\_\_\_\_ **WT** \_\_\_\_\_ **HT** \_\_\_\_\_ **BSA** \_\_\_\_\_ **T** \_\_\_\_\_ **P** \_\_\_\_\_ **R** \_\_\_\_\_ **BP** \_\_\_\_\_

(All campers must have a physical exam conducted by a medical doctor prior to camp. If off treatment, physical exam needs to be w/in 24 months prior to attending camp.)

Skin: \_\_\_\_\_ Central catheter: \_\_\_\_\_

HEENT: \_\_\_\_\_

Neck: \_\_\_\_\_ Thyroid: \_\_\_\_\_ Back: \_\_\_\_\_

Heart: \_\_\_\_\_ Chest: \_\_\_\_\_

Abdomen: \_\_\_\_\_ Spleen: \_\_\_\_\_ Liver: \_\_\_\_\_

Genitalia/Testes: \_\_\_\_\_ Neuro: \_\_\_\_\_

Menstruating? \_\_\_\_\_ Yes \_\_\_\_\_ No Extremities: \_\_\_\_\_

Allergies (especially to drugs): \_\_\_\_\_

**Lab Results: Needed only if on therapy w/in the last 6 months**

Date of most recent CBC: \_\_\_\_\_

WBC: \_\_\_\_\_ Segs: \_\_\_\_\_ ANC: \_\_\_\_\_ Other: \_\_\_\_\_

HGB: \_\_\_\_\_ HCT: \_\_\_\_\_

Platelets: \_\_\_\_\_

Do you expect child to be:  Neutropenic  Thrombocytopenic during their week at camp

**\*\*Please remember to notify the Okizu office of any special needs of this camper.\*\***

**Physician name and location:** \_\_\_\_\_  
(Please Print)

**Physician signature:** \_\_\_\_\_ **Date:** \_\_\_\_\_

**Phone:** \_\_\_\_\_

**\*\*\*Please complete both sides of this form\*\*\***

# To be completed by child's physician

Camper's Name: \_\_\_\_\_

**We need your help.** The Okizu Medical Staff want to do everything we can to make it possible for children to attend Okizu, and we need your help.

- Please consider the timing of camp attendance relative to medications given (particularly IV or IM meds), and encourage your patients to sign up to attend Camp Okizu when they will be experiencing the fewest negative symptoms of treatment.
- For those children who must receive scheduled IV or IM medication while at camp, please contact our office at 415 382-9083 or info@okizu.org, so we can be sure to be prepared to meet those needs.
- The treating center must send the child to camp with all meds, tubing, equipment, supplies, and a written order, as well as any necessary documentation you need for protocol compliance or your records.

**Please list all medications to be administered at camp:**

No meds needed at camp

<u>Name</u>	<u>Dose</u>	<u>Route</u>	<u>Freq.</u>
1. _____			
2. _____			
3. _____			
4. _____			
5. _____			
6. _____			
7. _____			
8. _____			

**Lab orders at camp:**

No labs needed at camp

(Send a copy of insurance forms or a copy of your insurance card.)

1. _____
2. _____
3. _____
4. _____

**Other orders at camp:**

No orders needed at camp

1. _____
2. _____

**This child is able to participate in all camp activities:** \_\_\_\_\_ Yes \_\_\_\_\_ No - If no, please explain:

\_\_\_\_\_  
\_\_\_\_\_

**\*\*\*Bring this completed and signed form to the bus\*\*\***